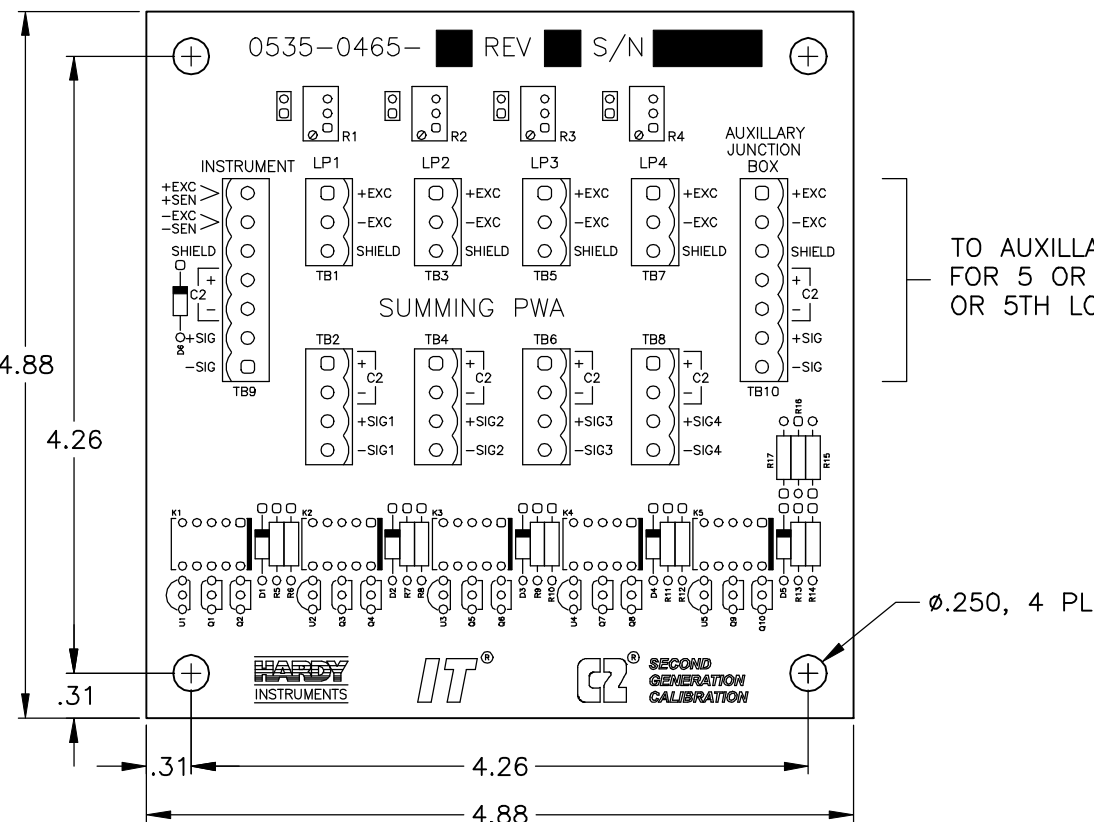
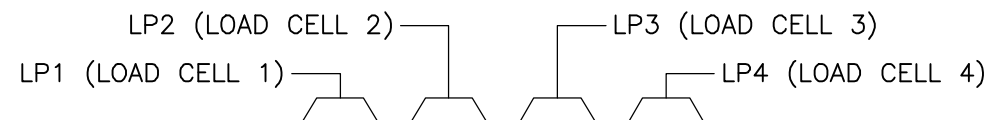


# JUNCTION BOX FIELD WIRING

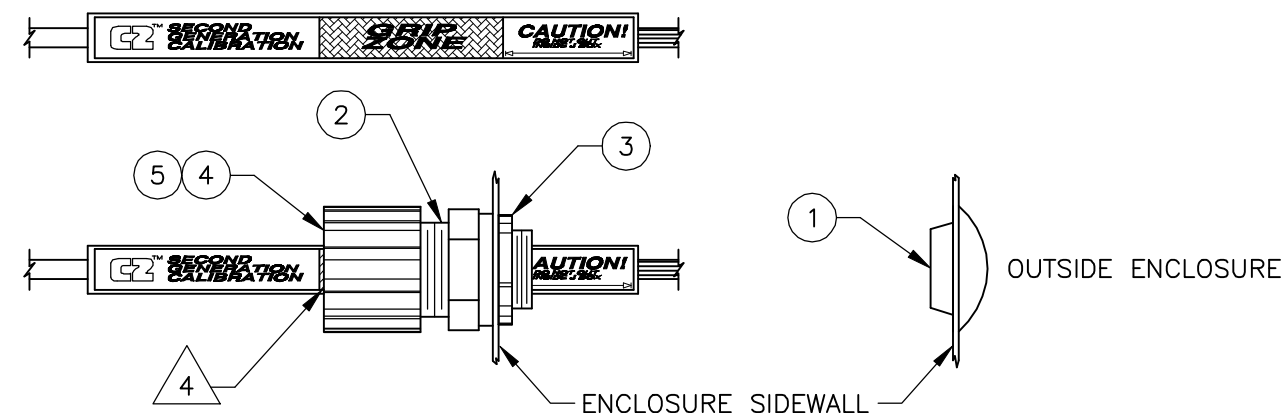


REV.	ECO/DDC	DESCRIPTION	DATE	DRAFT	CHECK	APV'D
A	----	RELEASED.	11-14-97	V.J.C.	P.W.	D.C.B.
B	07269	REVISED PER ECN.	05-08-00	L.B.O.	V.J.C.	G.I.

## MODEL NUMBERS 6

HI 215IT-XXX	DESCRIPTION	HARDY P/N
SS	1 STAINLESS STEEL ENCLOSURE W/O TB10	0519-0522-01
	2 STAINLESS STEEL ENCLOSURE W/TRIM POTS	0519-0522-02
PS	1 PAINTED STEEL ENCLOSURE W/O TB10	0519-0523-01
	2 PAINTED STEEL ENCLOSURE W/TRIM POTS	0519-0523-02
FG	1 FIBERGLASS ENCLOSURE W/O TB10	0519-0524-01
	2 FIBERGLASS ENCLOSURE W/TRIM POTS	0519-0524-02

## CABLE CONNECTION 3



7. SEE SHEET 2 FOR ENCLOSURE MOUNTING DIMENSIONS.

6 OPTIONAL TRIM POTS CAN NOT BE USED WITH C2 OR SOFCAL.

5. REFER TO INSIDE OF JUNCTION BOX COVER FOR GUIDELINES.

4 INSERT C2 LOAD CELL CABLE THROUGH GRIP FITTING AND TIGHTEN ON CABLE AREA MARKED GRIP ZONE. ALIGN END OF GRIP FITTING TO COMPLETELY COVER CABLE GRIP ZONE.

3 THE FOLLOWING PARTS ARE SHIPPED INSIDE JUNCTION BOX AND ARE TO BE INSTALLED IN LOCATIONS REQUIRED BY CUSTOMER:

ITEM	PART NUMBER	QTY	DESCRIPTION
1	2545-0009	2	1.0 DIAMETER PUSH IN PLUG, NEMA 4 RATED
2	2552-0003	5	1.12 DIAMETER RUBBER GASKET
3	2806-0014	5	.50 DIAMETER STEEL LOCKNUT FASTENER
*4	6007-0060	4	1/2 NPT NYLON CORD GRIP STRAIN RELIEF, .250 - .375 DIA (WHITE GRIP)
*5	6007-0061	1	1/2 NPT NYLON CORD GRIP STRAIN RELIEF, .375 - .500 DIA (BLUE GRIP)

\* FOR C2 OPTION, ITEM 4 WILL BE QTY 0 AND ITEM5 WILL BE QTY 5

2. USE HARDY INSTRUMENTS P/N 6020-0001 C2 CERTIFIED LOAD CELL CABLE.

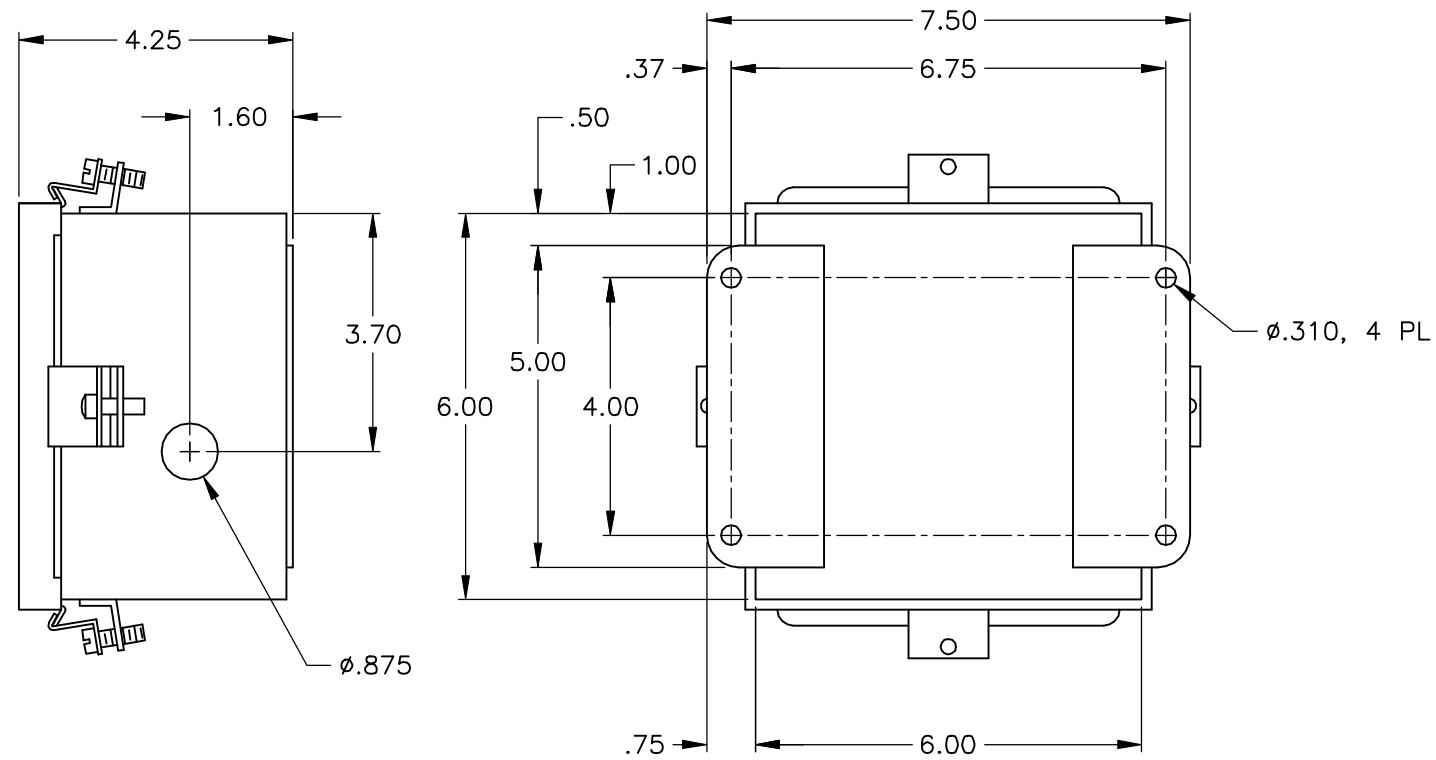
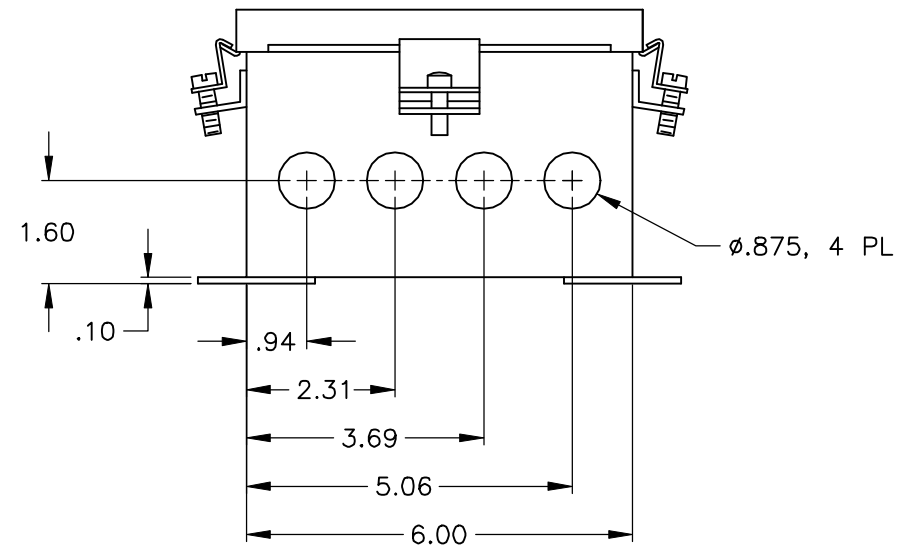
1. REFER TO LOAD CELL CAL SHEET OR WEIGHING ASSEMBLY SELECTION GUIDE FOR LOAD CELL WIRING COLOR CODE.

### NOTES: UNLESS OTHERWISE SPECIFIED

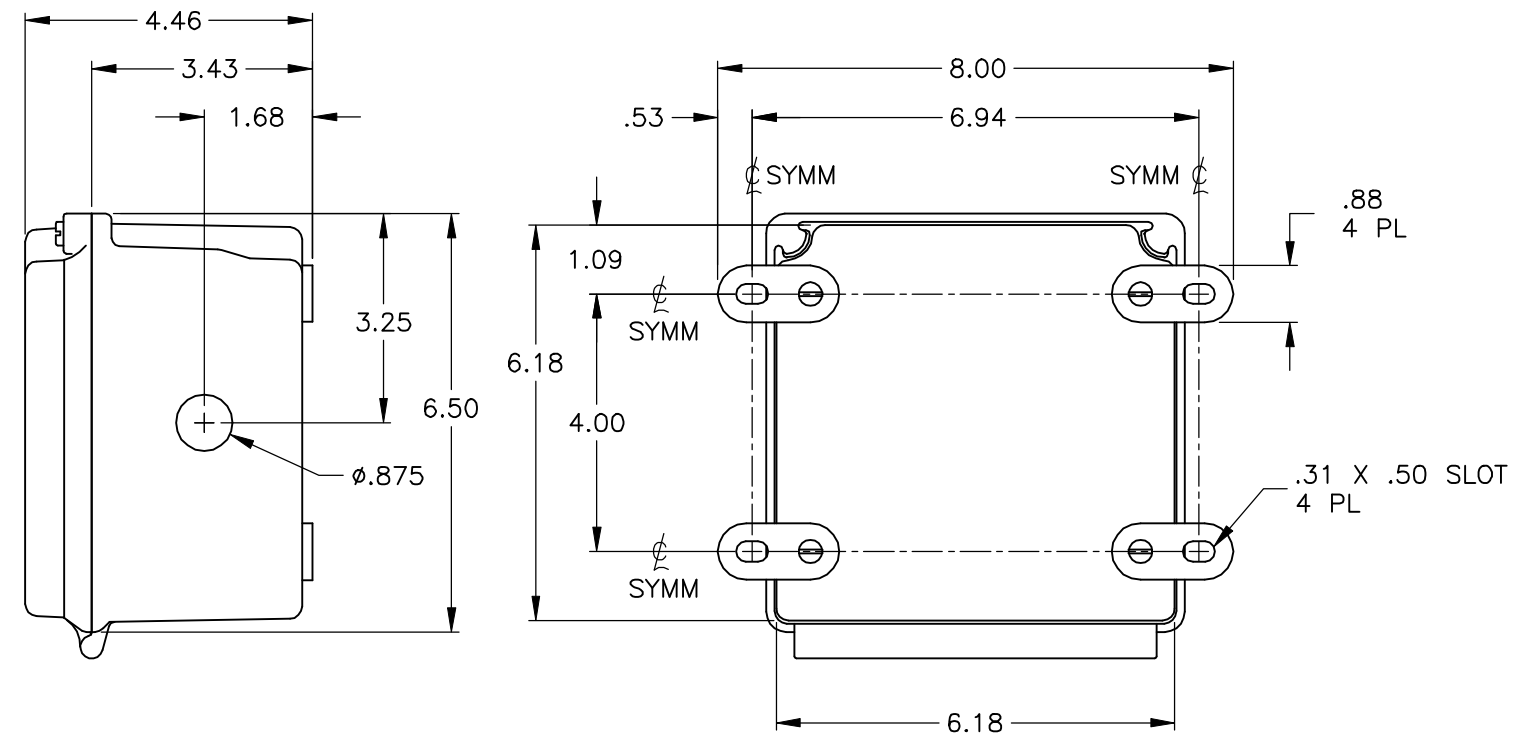
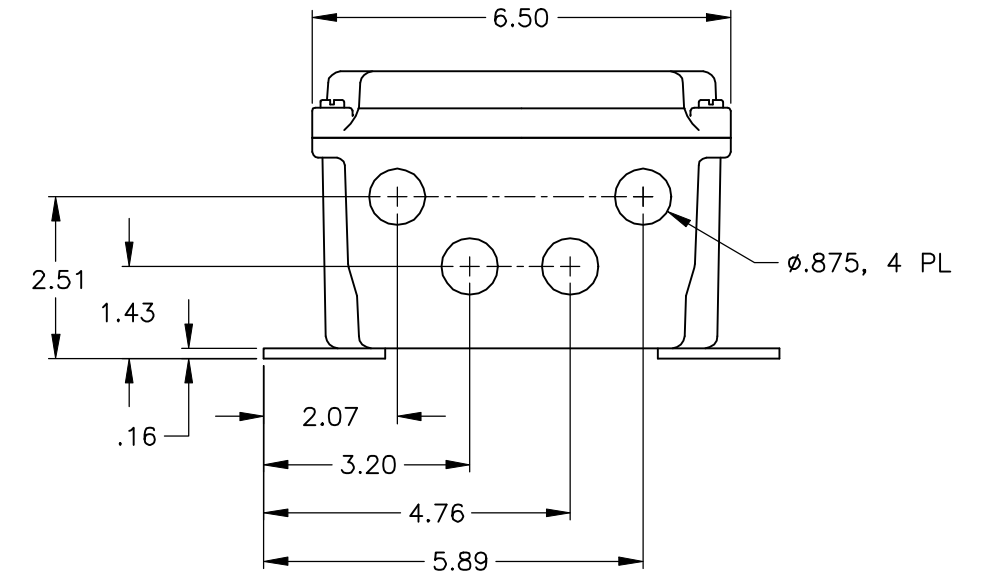
PROPRIETARY NOTICE  
ALL DATA AND INFORMATION CONTAINED IN OR DISCLOSED BY THIS DOCUMENT IS CONFIDENTIAL AND PROPRIETARY INFORMATION OF HARDY INSTRUMENTS INC. AND ALL RIGHTS THEREIN ARE EXPRESSLY RESERVED. BY ACCEPTING THIS MATERIAL THE RECIPIENT AGREES THAT THIS MATERIAL AND THE INFORMATION CONTAINED THEREIN IS HELD IN CONFIDENCE AND IN TRUST AND SHALL NOT BE USED, COPIED, REPRODUCED IN WHOLE OR IN PART, NOR ITS CONTENTS REVEALED IN ANY MANNER TO OTHERS, EXCEPT TO MEET THE SPECIFIC PURPOSE FOR WHICH IT WAS DELIVERED.

ITEM	QTY	PART NUMBER	DESCRIPTION	COMMENTS
UNLESS OTHERWISE SPECIFIED DIMENSIONS ARE IN INCHES TOLERANCES ARE: FRACTIONS: N/A DECIMALS: .XX = ±.03 .XXX = ±.010 ANGLES: ±0°, 30'				
CONTRACT NO.			APPROVALS	
DRAWN V. CHULA			DATE 11-12-97	
CHECKED P. WYLIE			DATE 11-14-97	
APPROVED D. BOYDEN			DATE 11-14-97	
ISSUED K. McNULTY			DATE 11-17-97	
PRODUCTION			DATE	
DO NOT SCALE DRAWING				
MATERIAL <span style="border: 1px solid black; padding: 2px;">1</span>		FINISH <span style="border: 1px solid black; padding: 2px;">2</span>		
TITLE <b>HARDY INSTRUMENTS</b> I/I DIAGRAM, IT SUMMING		SIZE D	FSCM 21316	DRAWING NO. 0584-0031
REV. B		FILE NAME: 584031B1.DWG SCALE: NONE SHEET 1 OF 2		

STAINLESS STEEL &  
PAINTED STEEL  
ENCLOSURE



FIBERGLASS  
ENCLOSURE



**HARDY  
INSTRUMENTS**

TITLE  
I/I DIAGRAM,  
IT SUMMING

SIZE	FSCM	DRAWING NO.	REV.
D	21316	0584-0031	B
FILE NAME: 584031B1.DWG		SCALE: NONE	SHEET 2 OF 2