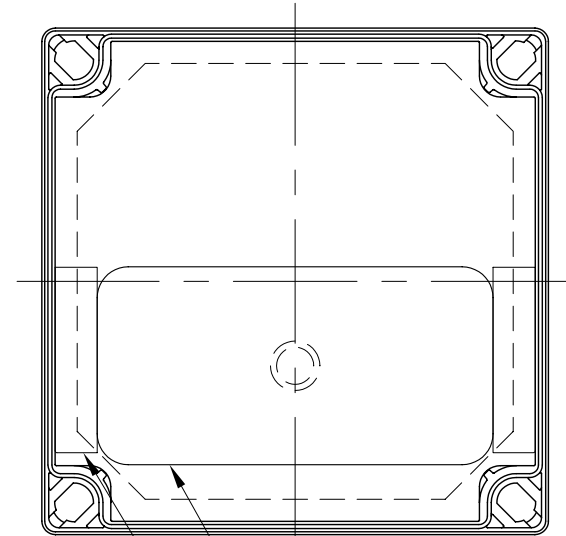


REV	REVISIONS	DATE	APP'D
A	ORIGINAL RELEASE		
B	CHANGED PER ECO# 3254	12/05	EDC
C	ADDED NOTE 1	12/07	GLM
D	ADDED NOTE 2	2/11	GLM

COVER ASSEMBLY (SHOWN INVERTED)

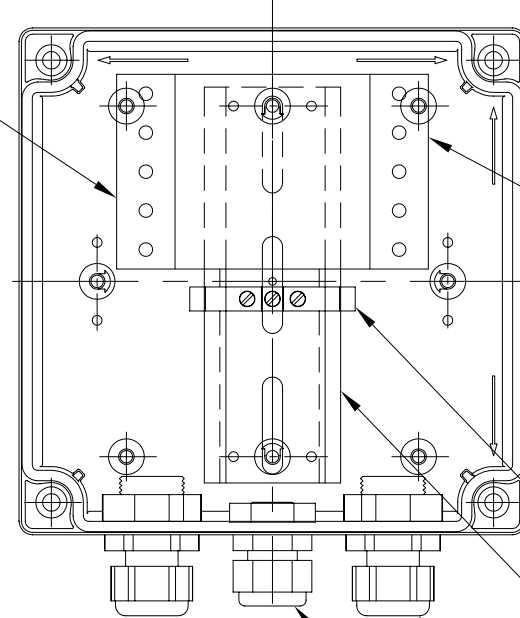


9112006, DESICCANT CANISTER

2x 9651032, PVC FOAM

COVER ASSEMBLY NOT SHOWN

SEE NOTE 1



LIGHTNING ARRESTOR
(9802902 OPTIONAL)
M SYSTEM UNIT SHOWN

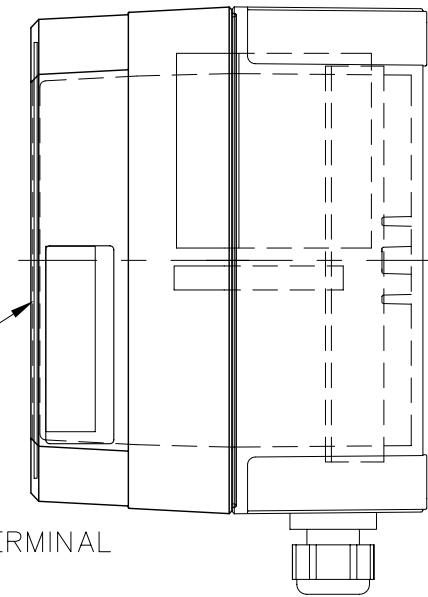
2025400, LABEL

9123015, GROUND TERMINAL

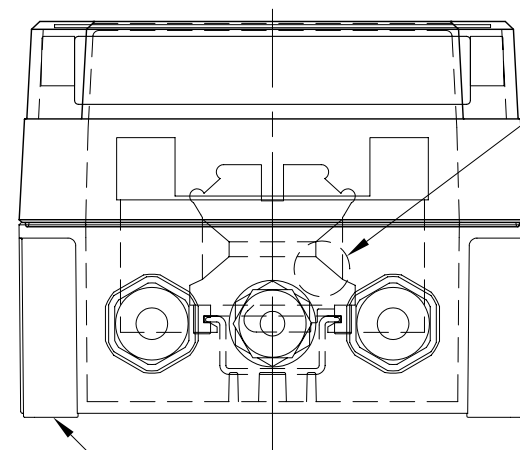
2025109, DIN RAIL

2x 9413546, STRAIN RELIEF
2x 9404045, O-RING

9413543, STRAIN RELIEF
9404044, O-RING



9405332, GORTEX MEMBRANE
CENTERED ON HOLE (INSIDE WALL)



2024900, ENCLOSURE

NOTES:

1. OPTIONAL LIGHTNING ARRESTOR MAY BE MANUFACTURED BY M SYSTEM OR PHOENIX CONTACT. IF THE PHOENIX CONTACT PART IS SUPPLIED, ORIENT THE GROUND TERMINAL TO THE LEFT.
2. TIGHTLY WRAP COMPLETED ASSEMBLY WITH SHRINK WRAP SO AS TO SEAL CABLE GLANDS AND PREVENT MOISTURE FROM SATURATING DESICCANT.

DIMENSIONS ARE INCHES ALL METRIC DIMENSIONS ARE DERIVED FROM INCHES		JOWA USA		PRESSURE CELL JUNCTION BOX		
.X± .020	∠ ±1/2					
.XX± .010		DRN: GLM	3/7/05	B	2025200	REV. D
.XXX± .005		CKD:				
NEXT ASSY	USED ON	APPD: EDC	3/7/05	SCALE: 1:2	SHEET 1 OF 1	