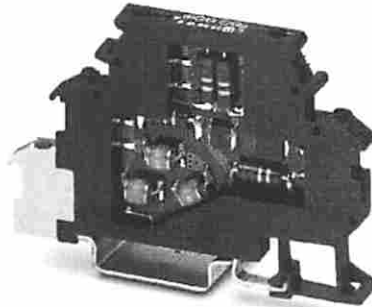


## TT-2-PE- 24DC



Modular terminal block with three-stage surge protection for a floating double conductor, separate ground connection, nominal voltage: 24 V DC, for mounting on NS 35/7.5, terminal width: 6.2 mm, terminal height: 54,6 mm

### Commercial data

EAN	4017918172855
Pack	10 Pcs.
Customs tariff	85363010
Weight/Piece	0.02667 KG

### Product notes

WEEE/RoHS-compliant since:  
06/28/2006



### Technical data

#### General

Housing material	PA 6.6
Inflammability class acc. to UL 94	V2
Color	black
Total surge current (8/20) $\mu$ s	10 kA
Total surge current (10/350) $\mu$ s	1 kA
Ambient temperature (operation)	-40 °C ... 85 °C
Mounting type	DIN rail 35 mm

## TT-2-PE- 24DC

---

Design	Double-level terminal block with PE foot – separate PE connection
Degree of protection	IP20
Direction of action	Line-Line & Line-Earth Ground
Width	6.20 mm
Height	54.60 mm
Length	79.60 mm
<b>Protective circuit</b>	
IEC category	C1 C2 C3 D1
Nominal voltage $U_N$	24 V DC 17 V AC
Max. operating voltage $U_{max}$	30 V DC 21 V AC
Arrester rated voltage $U_c$	30 V DC 21 V AC
Arrester rated voltage $U_c$ (Core-Core)	30 V DC 21 V AC
Nominal current $I_N$	300 mA (45°C)
Operating effective current $I_c$ at $U_c$	$\leq 10 \mu A$
Discharge current to PE at $U_c$	$\leq 1 \mu A$
Nominal discharge surge current $I_n$ (8/20) $\mu s$ (Core-Core)	5 kA
Nominal discharge surge current $I_n$ (8/20) $\mu s$ (Core-Earth)	5 kA
Max. discharge surge current $I_{max}$ (8/20) $\mu s$ maximum (Core-Core)	5 kA
Max. discharge surge current $I_{max}$ (8/20) $\mu s$ maximum (Core-Earth)	5 kA (per path)
Nominal power pulse current $I_{an}$ (10/1000) $\mu s$ (Core-Core)	100 A
Nominal power pulse current $I_{an}$ (10/1000) $\mu s$ (Core-Earth)	100 A (per path)
Lightning test current (10/350) $\mu s$ , peak value $I_{mp}$	500 A (per path)
Output voltage limitation at 1 kV/ $\mu s$ (Core-Core) spike	$\leq 44 V$

---

## TT-2-PE- 24DC

---

Output voltage limitation at 1 kV/ $\mu$ s (Core-Earth) spike	$\leq 650$ V
Output voltage limitation at 1 kV/ $\mu$ s (Core-Core) static	$\leq 44$ V
Output voltage limitation at 1 kV/ $\mu$ s (Core-Earth) static	$\leq 650$ V
Residual voltage at $I_n$ (conductor-conductor)	$\leq 50$ V
Protection level $U_p$ (Core-Core)	$\leq 53$ V (C2 (10 kV/5 kA))
Protection level $U_p$ (Core-Earth)	$\leq 650$ V (C2 (10 kV/5 kA))
Response time $t_A$ (Core-Core)	$\leq 1$ ns
Response time $t_A$ (Core-Earth)	$\leq 100$ ns
Input attenuation aE, sym.	0.8 dB ( $\leq 400$ kHz)
Cut-off frequency fg (3 dB), sym. in 50 Ohm system	Typ. 3 MHz
Cut-off frequency fg (3 dB), sym. in 150 Ohm system	Typ. 1 MHz
Capacity (Core-Core)	4 nF
Resistance in series	3.7 $\Omega$ 5 % (per path) 3.7 $\Omega$
Surge carrying capacity in acc. with IEC 61643-21 (Core-Core)	C2 (10 kV/5 kA)
Surge carrying capacity in acc. with IEC 61643-21 (Core-Earth)	C2 (10 kV/5 kA) D1 (500 A)

### General

Type of connection	Screw connection
Connection type IN	Screw terminal blocks
Connection type OUT	Screw terminal blocks
Screw thread	M 3
Tightening torque, min	0.8 Nm
Stripping length	8 mm
Conductor cross section stranded min.	0.2 mm <sup>2</sup>
Conductor cross section stranded max.	2.5 mm <sup>2</sup>
Conductor cross section solid min.	0.2 mm <sup>2</sup>
Conductor cross section solid max.	4 mm <sup>2</sup>
Conductor cross section AWG/kcmil min.	24
Conductor cross section AWG/kcmil max	12

---

# TT-2-PE- 24DC

## Connection, protective circuit

Standards/regulations

IEC 61643-21

## Accessories

Item	Designation	Description
------	-------------	-------------

### Assembly

Cover for setting the end of a TERMITRAB TT-2-PE... and TT-2/2 row of terminal blocks, color: black

## Additional products

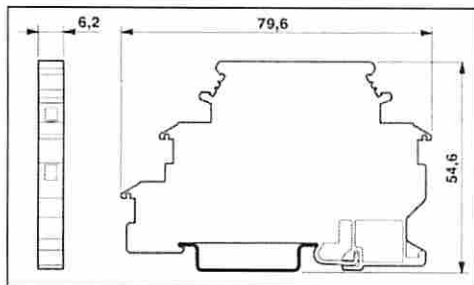
Item	Designation	Description
------	-------------	-------------

### Assembly

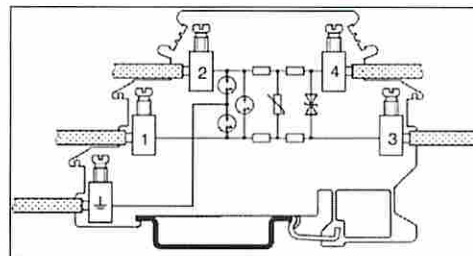
2838995	D-DEK 1,5 BK	Cover for setting the end of a TERMITRAB TT-2-PE... and TT-2/2 row of terminal blocks, color: black
2839295	SSA 3-6	shield fast connections for conductor cross sections 3 - 6 mm. Potential connection cable: 200 mm, black
2839512	SSA 5-10	Shield fast connection for conductor cross sections 5 - 10 mm. Potential connection cable: 200 mm, black

## Drawings

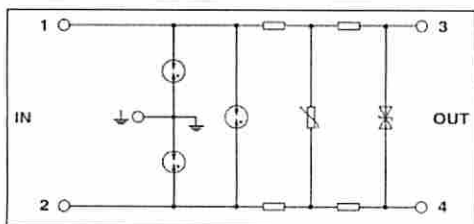
Dimensioned drawing



Schematic diagram



Circuit diagram



METER

TRANSMITTER