

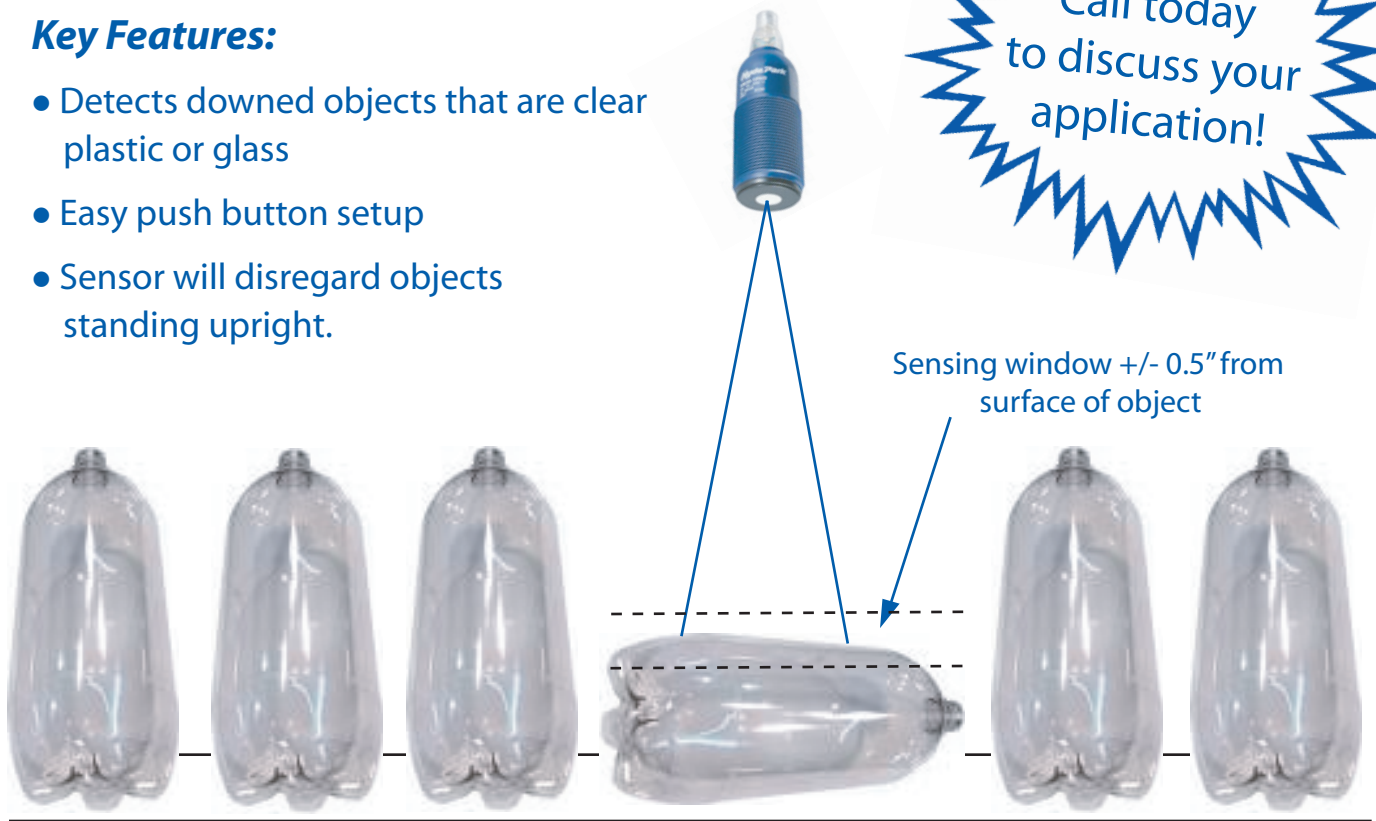
# Application Success Story

**Challenge:** reliable high-speed sensing of clear plastic and glass bottles "down"

**Solution:** Hyde Park Ultrasonic Sensor

**Key Features:**

- Detects downed objects that are clear plastic or glass
- Easy push button setup
- Sensor will disregard objects standing upright.



**Standard Specifications:**

**Sensing Range:** 4" to 39" (100 to 1000mm)

**Sonic Frequency:** 180kHz

**Supply Voltage:** 12 - 30 VDC @ 60mA

**Outputs:** PNP or NPN (max. load current 100mA)

**Repeatability:** 1.6mm (0.62")

**Response Time:** 30ms on/off maximum

*Note: Sensor's parameters are software configurable by Trask*

**Indicators:** multicolor - green, amber

**Connection Options:** M12 connector  
*or* integral cable, 3m

**Operating Temperature:** 0 to 70 deg. C

**Protection Ratings:** NEMA 4X, IP67

**Barrel Dimensions:** 30 x 1 x 95.26mm  
(1.18" x 2.55" x 3.75")



See us on the web: [www.traskinstrumentation.com](http://www.traskinstrumentation.com)

414 West Poinsett Street, Greer, SC 29650

Phone: (864) 848-3993 Fax: (864) 848-9569 E-mail: [mtrask@bellsouth.net](mailto:mtrask@bellsouth.net)