



Model AC100
2-conductor transmitter connector cable, 3 m (10'), for all SM100 series Amphenol and SM700 series Amphenol connector-style, thru-beam transmitters



Model AC105
Straight, 7/8-16 mini, 4-conductor mating connector cable, 4 m (12'), used with SM500 family connector-style, prox sensors



Model AC105-50
Straight, 7/8-16 mini, 4-conductor mating connector cable, 15 m (50'), used with all SM500 family connector-style, prox sensors



Model AC107
Straight, 7/8-16 mini, 2-pin, 2-conductor mating connector cable, 4 m (12'), used with all SM100 series watertight and SM700 series watertight, connector-style, thru-beam transmitters



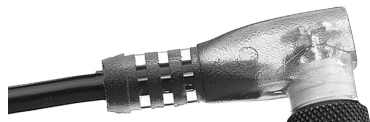
Model AC108
Straight, 7/8-16 mini, 3-pin, 3-conductor mating connector cable, 4 m (12'), used with all SM100 series watertight and SM700 series watertight, connector-style, thru-beam receivers



Model AC115
Straight, 7/8-16 mini, 5-conductor mating connector cable, 4 m (12'), used with SM552A-X7X series dual-level, connector style prox sensors with alarms, with SM554B-XXX series synchronized gate-controlled, connector-style prox sensors, and with SM556A-X9X series analog, connector-style prox sensors with alarms



Model AC115-50
Straight, 7/8-16 mini, 5-conductor mating connector cable, 15 m (50'), used with SM552A-X7X series dual-level connector-style prox sensors with alarms, with SM554B-XXX series synchronized gate-controlled, connector-style prox sensors, and with SM556A-X9X series analog, connector-style prox sensors with alarms



Model AC117
Right-angle, M12 micro, 4-conductor, connector/cable assembly with built-in LEDs, 5 m (16'), used with SM650 series and SM657 series miniature prox sensors and SM851 series miniature, connector-style, thru-beam receivers



Model AC118
Right-angle, M12 micro, 2-conductor connector/cable assembly, 5 m (16'), used with SM850 series miniature, connector-style thru-beam transmitters



Model AC119
Right-angle, M12 micro, 4-conductor connector/cable assembly, 5 m (16'), with built-in LED's, used with SM656 series miniature, connector-style analog prox sensors



Model AC127
Straight, M12 micro, 4-conductor connector/cable assembly with LED, 5 m (16') with LED's, used with SM650 series and SM657 series miniature, connector-style prox sensors and with SM851 series connector-style thru-beam receivers



Model AC128
Straight, M12 micro, 4-pin, 2-conductor, connector/cable assembly, 5 m (16'), used with SM850 series miniature, connector-style, thru-beam transmitters and SM850FP series miniature, flat-profile, connector-style thru-beam transmitters



Model AC129
Straight, M12 micro, 4-conductor, connector/cable assembly, 5 m (16'), with LEDs used with SM656 series miniature, connector-style analog prox sensors



Model AC130

Straight, M12 micro, 4-conductor connector/cable assembly, 5 m (16'), used with SM650FP, SM656FP, SM657FP, SM950, SM952, SM956, VM1, VM18, VM30 and CT1500 series sensors, connector style, and SM851FP series thru-beam receivers, connector style



Model AC138

Pico-to-micro pigtail adapter cable with reversed output pins, 0.2 m (7.9"), used with all SM350 series proximity sensors



Model AC132

Right-angle, M12 micro, 4-conductor connector/cable assembly, 5 m (16'), used with SM950, SM952, SM956, VM1, VM18, VM30 and CT1500 series sensors



Model AC140

Mini-to-micro 4-conductor pigtail adapter cable, 0.2 m (7.9"). Used with all SM600 series proximity sensors.

Model AC134

Right-angle, M8 pico, 4-conductor connector/cable assembly, 5 m (16'), used with all SM350 series proximity sensors



Model AC141

Right-angle, M8 pico, 3-conductor connector/cable assembly, 5 m (16'), used with all SM330 and SM340 series proximity sensors



Model AC135

Straight, M8 pico, 4-conductor connector/cable assembly, 5 m (16'), used with all SM350 series proximity sensors



Model AC142

Straight, M8 pico, 3-conductor connector/cable assembly, 5 m (16'), used with all SM330 and SM340 series proximity sensors



Model AC136

Straight, 5-pin M12 micro connector/cable assembly, 5m (16') O.D.V.A. compliant. Used with DeviceNet sensors.



Model AC143

Right angle, M8 pico, 3-pin, 2-conductor connector/cable assembly, 5 m (16') for SM430 connector-style transmitters



Model AC137

Pico-to-micro pigtail adapter cable, 0.2 m (7.9"), used with all SM350 series proximity sensors



Model AC144

Straight, M8 pico, 3-pin, 2-conductor connector/cable assembly, 5 m (16') for SM430 connector-style transmitters



Model AC145

Right-angle, M8 pico, 4-pin, 2-conductor connector/cable assembly, 5 m (16') for SM450 connector-style transmitters



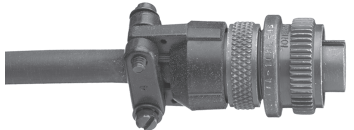
Model AC146

Straight, M8 pico, 4-pin, 2-conductor connector/cable assembly, 5 m (16') for SM 450 connector-style transmitters



Model AC149

Straight, 5 conductor/cable assembly, 2 m (6.6"). Used with SM650 with "AA" option, SM652 with "AA" option, and SM900 series with connector and "AA" option.



Model AC150

3-conductor connector cable, 3 m (10'), used with all SM100 series Amphenol and SM700 series Amphenol connector-style receivers



Model AC160

Cable Grip used with all SM100 and SM700 series cable-style, thru-beam sensors



Model AC172

DB9, RS232 straight-through cable, 2 m (6'), used with Model AC441A.

Model AC201

Stainless, right-angle, single thru-beam-sensor mounting bracket, slotted for adjustment for all SM100 series and SM700 series transmitters and receivers and for CS107 Web Sensing System transmitter and CS108 Web Sensing System receiver



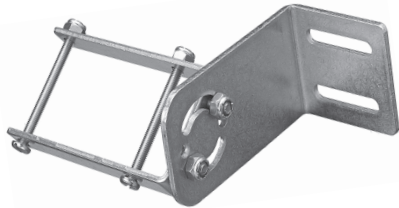
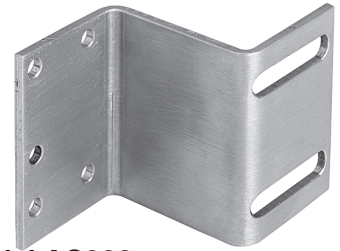
Model AC227

Large, right-angle, stainless mounting bracket used with all SM600 series miniature prox sensors and all SM800 series 18 mm miniature, thru-beam sensors



Model AC232

S-shaped, stainless, mounting bracket with base slotted for sensor adjustment, used with all flat-profile sensors



Model AC222

Standard, stainless mounting bracket assembly, slotted for vertical adjustment, used with all SM500 family prox sensors

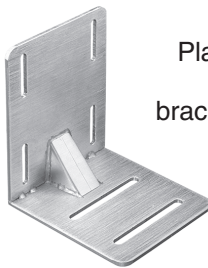


Model AC228

Small, right-angle, stainless, mounting bracket used with all SM600 series miniature prox sensors and all SM800 series 18 mm miniature thru-beam sensors

Model AC233

Small, right-angle, stainless mounting bracket with cable clearance slot, for all SM900 30 mm sensors.

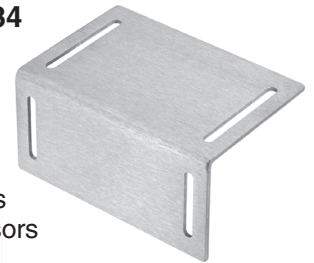


Model AC229

Plate-style, right-angle, stainless mounting bracket with base slotted for forward/reverse adjustment and side slotted for sensor adjustment, used with all SM500 family sensors

Model AC234

Right-angle, stainless mounting bracket used with all CT1000 series counting sensors



Model AC213

Stainless and Teflon remote sensing probe mounting bracket, used with all SM500 family prox sensors and all SM700 series remote thru-beam transmitters and receivers



Model AC230

Three-piece, stainless mounting bracket assembly with O-ring mount used with all SM500 family sensors with remote heads

Model AC235

Right-angle, stainless, mounting bracket, used with all SM300 series 12mm proximity sensors



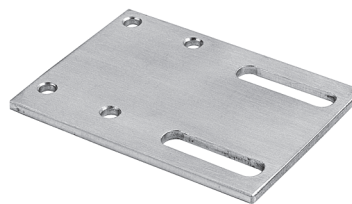
Model AC226

Stainless and polyamide conveyor-rail clamp/bracket set, used with all SM600 series miniature prox sensors and SM800 series 18 mm miniature thru-beam sensors



Model AC231

Straight, stainless, mounting bracket with side slotted for sensor adjustment, used with all flat-profile sensors.



Model AC236

Stainless and polyamide conveyor-rail clamp/bracket set, used with all SM300 series 12mm proximity sensors

Model AC237

Straight, stainless mounting bracket, used with all SM300 series 12 mm barrel proximity sensors

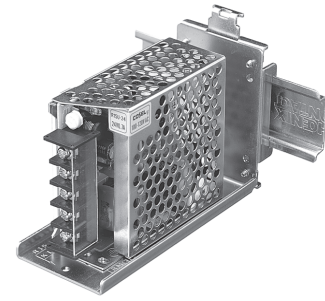


Model AC246

Right-angle, stainless mounting bracket, used with all SM300FP flat-profile series proximity sensors

Model AC240

Straight, stainless mounting bracket, used with all SM600 series 18 mm barrel proximity sensors



Model AC439

24 VDC Power Supply, 700 mA Load capacity with AC and DC screw terminals; used with all DC-powered Hyde Park sensors

Model AC443 Sensor Power Pack

Provides 18VDC power for most sensors via M12 connector. Provides discrete on-off and variable analog indication. Includes pushbutton for limit/span setting of VM1/18/30/80 sensors.



Model AC241

Steel/black oxide, 45° angle, label edge mounting bracket used with SM6X7A-A08-01FP or SM6X7A-A08-11FP flat-profile label sensors

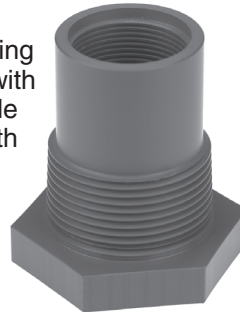
Model AC247

Stainless and polyamide conveyor rail clamp / bracket set, used with all SM300FP series proximity sensors



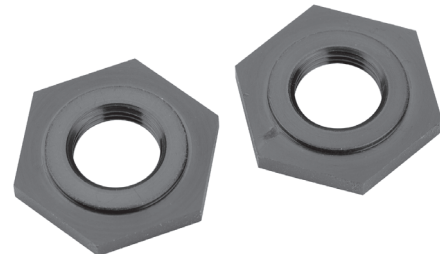
Model AC250-n

Tank sensor mounting reducer, available with four different outside diameters; used with all SM900 family sensors.
n = 1 (1 1/4" NPT);
n = 2 (2" NPT);
n = 3 (3" NPT);
n = 4 (4" NPT)



Model AC441A HandHeld Configurator

Used without a computer to set window and span limits of 30 mm discrete and analog sensors, and to display object distance. It's used with a computer to configure SC model sensors using SUPERPROX+ software:
AC441A - Configurator without P/S
AC441A - 1 includes AC P/S, S/W
AC441A - 2 includes UK P/S, S/W
AC441A - 3 includes Eur P/S, S/W
AC441A - 4 includes Aus/NZ P/S, S/W
AC441A - US includes P/S, S/W, AC130 cable, AC172 RS-232 cable



Model AC242

Pair of hex nuts for adapting all 12 mm diameter SM300 series proximity sensors to 18 mm diameter mounting bracket



Model AC251-n

Tank sensor mounting flange available in three different pipe thread diameters, furnished with matching AC250 tank sensor mounting reducer; used with all SM900 family sensors.
n = 2 (2" NPT x 6" dia.);
n = 3 (3" NPT x 7.5" dia.);
n = 4 (4" NPT x 9" dia.)

Model AC243

Pair of hex nuts for adapting all 12 mm diameter SM300 series proximity sensors to 30 mm diameter mounting bracket

Model AC244

Pair of hex nuts for adapting all 18 mm diameter proximity sensors to 30 mm diameter mounting bracket



Model PB100

In-line accessory push-button for teaching window limits for Virtu series sensors.