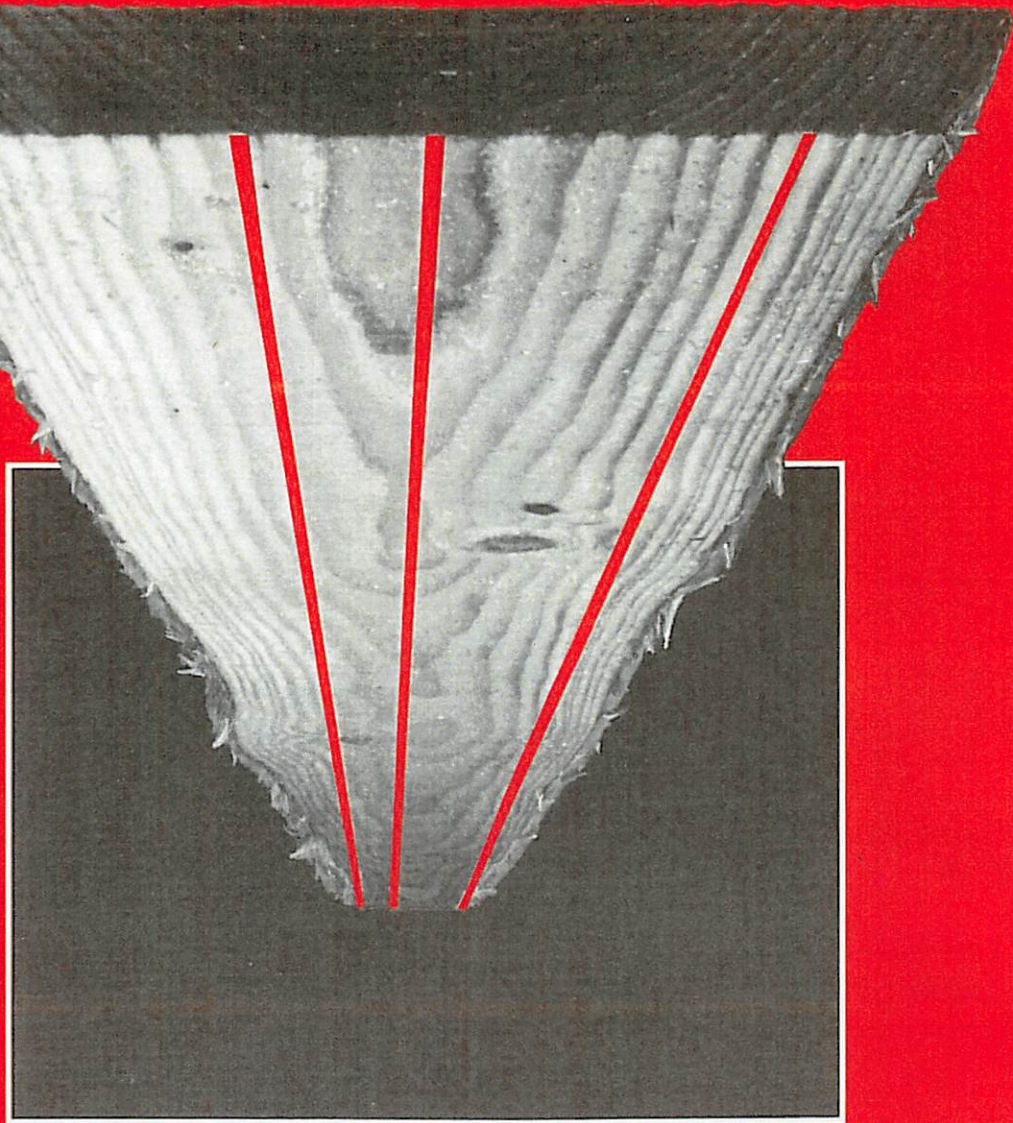


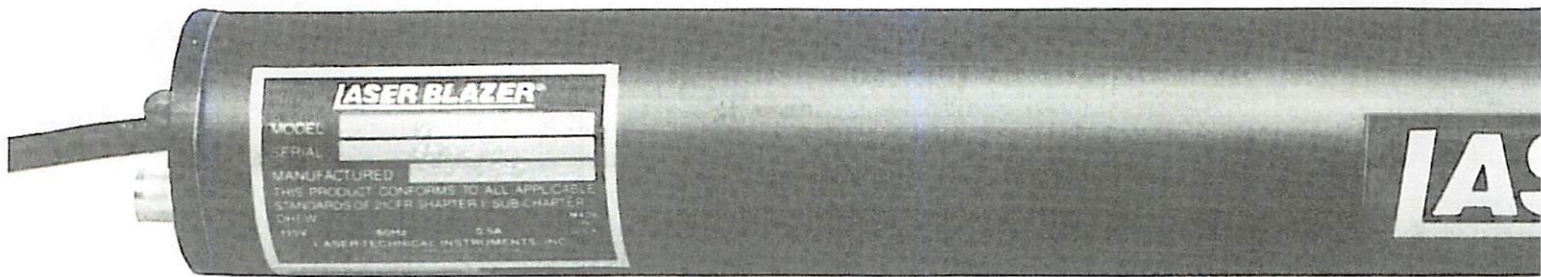
**Lighting the Way to
Greater Productivity**



**Laser Linemaker Instruments for the
Forest Products and Construction Industries**

LASER BLAZER[®]

Linemaker



About Lasers...

"LASER" is an acronym formed from the first letters of the words "Light Amplification by Stimulated Electromagnetic Radiation." There are many kinds of lasers and they produce light which varies from the ultra-violet through the visible spectrum and up to infra-red. The higher power lasers generate heat and are used for metal-cutting, heat treating, welding and certain surgical procedures.

As a low-power source, the helium-neon laser provides intense, visible red light that is highly directional and controllable. Its directability and brilliance make it ideal for visual optimizing.

The LASER BLAZER linemaker, a pioneer in the field of low-power lasers for application in the forest products industries, produces a dot or a line. When this line of light is laid on a log, a cant, a board or a plywood sheet, it is narrow and bright for its entire

length. This gives the sawyer an excellent reference line for his cut.

The high efficiency and modest cost of the LASER BLAZER linemaker make it the obvious replacement for shadow-line equipment based on an incandescent light source. Its unique optics, ruggedness, portability and long life have made it the leading laser linemaker instrument now in use in the forest products and wood-working industries.

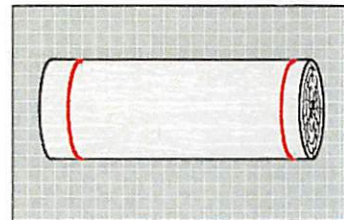
Some uses for the LASER BLAZER linemaker include mounting on edgers, head-rigs, trim saws, rip and gang saws, resaws, leveling of floors and ceilings, and positioning of overhead cranes for fast, safe and sure pickups and placements.

Any job requiring precise and accurate marking or positioning should be considered a candidate for the highly efficient optimizing made possible by the LASER BLAZER linemaker.

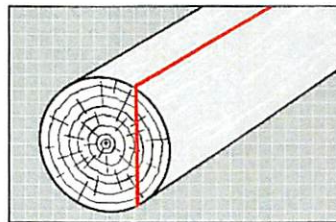
Sawmill Uses for the Laser Blazer Line

Log Cutoff

With a special small angle lens, the LASER BLAZER linemaker provides a shorter, brighter line across the log to help determine cutoff lengths for savings of time and wood.



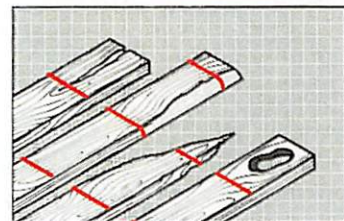
At the Headrig



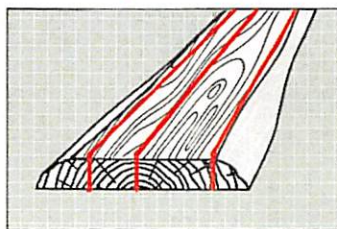
The thin, brilliant line emitted by the LASER BLAZER linemaker lets the sawyer choose the optimum cutting line to get the most value from the log.

Trim Sawing

Finding the best trim point is easy and fast with the help of the LASER BLAZER linemaker's bright, distinct red line.



At the Edger



This is where most lasers are used. Typically, the LASER BLAZER linemaker will be mounted to move with the edger's shifting saws. This gives the operator a display of lines leading to a cutting decision which results in the least waste and improves the grade of the finished lumber.

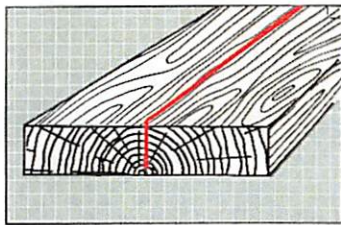
ER BLAZER®

AVOID EXPOSURE
LASER LIGHT IS EMISSION
Hazardous

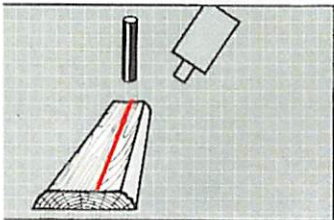
er

Resawing

A LASER BLAZER linemaker aligned with the bandsaw provides a guide to increase production and reduce wood waste by permitting a visual assessment for the operator.



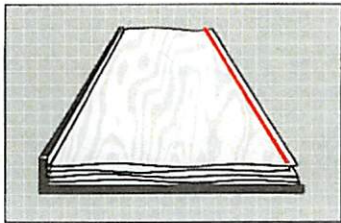
On Optimizers



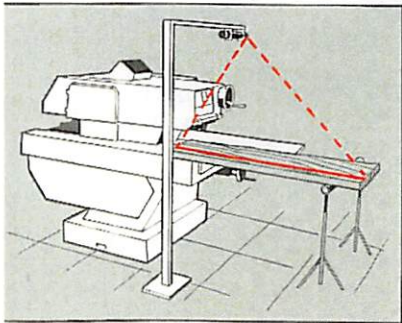
Leading brands of edger and trimmer optimizers combine the dependable LASER BLAZER linemaker with scanners to measure cross sections, to detect feather edges, shear cuts, waness and broken ends, and to provide other profile information necessary for fully-automated systems.

Plywood Layup

Mounted above the spreader, the LASER BLAZER linemaker provides a clean, sharp line to permit instant visual assessment of key edges during layup. Normally used in conjunction with a mirror, the line is an important aid in the prevention of edge voids.



Gang Rip



Trim, cutoff or other re-sawing for furniture and similar wood manufacturing is simpler and more cost-effective with the aid of the LASER BLAZER linemaker.

Solidly Built for Long Life

Proven performance over years of demanding duty has made the LASER BLAZER linemaker the largest-selling laser for the forest products industries. It is built tough to withstand the shocks that go with sawmill machinery, yet is a precise optical instrument, with quality components throughout.

Versatile: The same basic instrument is available in models that project a dot or a line. Projection can be parallel or at a right angle to the housing. The line fan angle can be specified to suit the desired application.

Reliable: Hermetically sealed aluminum case encloses laser generator and optics within its 1/4-inch-thick (6.35mm) walls for isolation from shock, vibration and contaminants. (Note: Any instrument of this type can be damaged by excessive shock. The user is advised to exercise normal caution, especially during installation.) Solid state power system is not damaged by low voltages, and is protected from electrical transients.

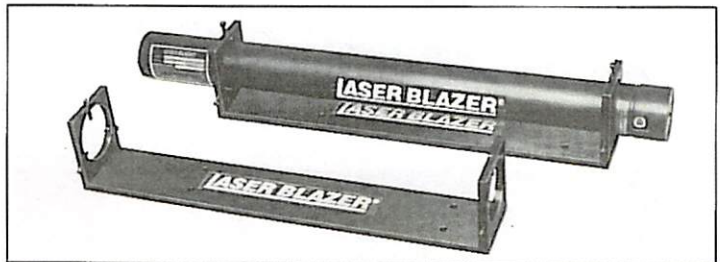
Easy to Use: Compact and lightweight, the LASER BLAZER linemaker has a self-contained power unit mounted within the rugged aluminum housing. It may be plugged into any outlet of the rated voltage (optional voltages available).

Easy to Install: The optional universal mounting bracket simplifies installation for fixed or shifting systems. With the bracket fastened in position, the LASER BLAZER linemaker can be aligned easily and quickly.

Accurate: Exclusive optical system produces a bright red line of constant width and uniformity that is unique to the LASER BLAZER linemaker. Line is easily seen under normal light conditions.

Low Operating Cost: Consumes less than 50 watts of power. Provides years of dependable service.

Performance Tested: Each LASER BLAZER linemaker undergoes more than 250 hours of test operation at the factory to verify the integrity of components and construction.



This optional mounting bracket is fastened to any stable surface with screws or bolts. It holds the LASER BLAZER linemaker firmly in position. Screw adjustments permit fast and easy movement of the linemaker laterally, or rotation to aim the laser line for maximum visibility and sharpness over the entire length of the boards to be sawed.

Special Applications:

Our research department is ready to work with you to meet your special needs.

Repair Service

We repair all makes of laser linemakers.

Safety

The emission from the LASER BLAZER linemaker is a bright red light from a low-power, helium-neon laser. The light has no effect on skin, clothing, or other objects. However, it is intense, and just as one should not stare at the sun, neither should anyone look directly into the light or its reflection from a bright surface. The "Caution" and "Aperture" labels are reminders.

All LASER BLAZER linemakers conform to the regulations of the USDHHS, the U.S. Government agency which controls the use of lasers.

* Certified to Canadian Electrical Code by the Canadian Standards Association. (115 VAC only).

Maintenance

The only maintenance required is periodic lens cleaning. This is done with a clean, soft cloth or cotton swab soaked in alcohol. Harsh or abrasive materials will scratch the glass and diffuse the beam.

Mountings should be checked regularly to assure proper alignment.



Specifications

Voltage: Standard: 115VAC, 50/60Hz. 230VAC and 12V DC on special order at no extra charge.

Power Output: 5 milliwatts, pure red light.

Light Source: Helium-neon laser.

Power Consumption: Less than 50 watts.

Case Construction: 1/4-inch (6.35mm) wall aluminum, hermetically sealed.

Diameter: 2.25 inches (57.15mm).

Length: 24.5 inches (622.3mm).

Weight: 6.5 lbs. (2.95kg).

Fan Angle: 75 degree fan angle standard. Other fan angles on special order at no extra charge.

MOUNTING BRACKET

(Part No. 6500)

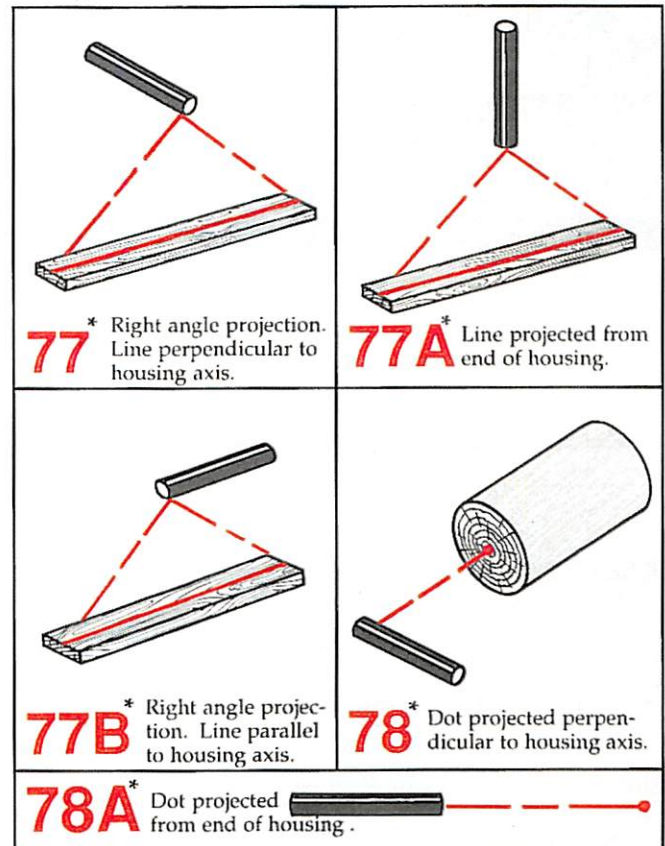
Length: 18.3 inches (464.82mm)

Width: 3 inches (76.2mm).

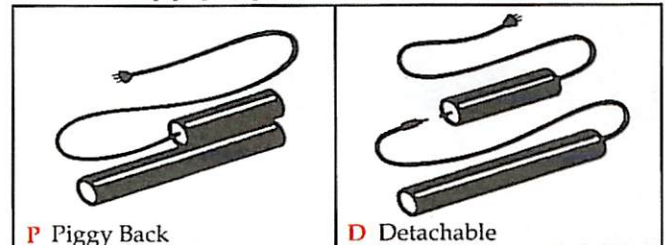
Height: 3.6 inches (91.44mm).

Product specifications may be changed without notice when engineering improvements become available.

Many Models to Choose From



Power Supply Options



When ordering, designate with suffix "P" or "D" after Model No.

The Blaster

High Power 15 mw Laser

Increases line visibility up to 40 feet • User-adjustable "Exact-Line" line intensity without laser misalignment • Eliminates masking or removal of bright ambient lighting • Available in all standard LASER BLAZER linemaker models

Other Models Available

LASER BLAZER linemakers are available in a variety of configurations: "LH" model has detached power supply and small casing for installation in tight spaces • "Flasher" model aids the operator by distinguishing between saw lines or between saw and moulding cutter locations • "Trim" model has maximum six-foot line for cut-off/trim applications



LASER BLAZER®

Trask Instrumentation Inc.

P.O. Box 1778

Greer, SC 29652-1778

864-848-3993 FX: 864-848-9569

www.traskinstrumentation.com

